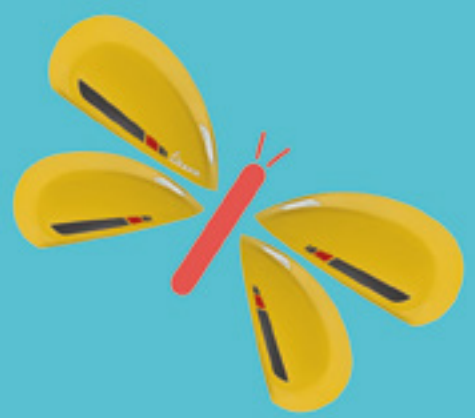


**Veaspa®**

**COLLECTION**





**LIVE**  
**MORE**  
**VESPA**



Vespa is a way of life and a state of mind, so much more than just a means of transport.

Much more than just a scooter it's the companion of countless adventures, a reflection of our own personality, a celebration of design, technology and independence. For generations it has inspired freedom, mixing elegance and style. Vespa continuously evolves and continues to be unique in design, whilst being innovative and sensitive in its values towards the environment.

Over 70 years old and still going strong, Vespa has transported generations, whilst at the same time being at the forefront of cultural and social revolutions, musical and lifestyle movements, films, art and songs. Today Vespa is one of the most well-known Italian products in the world.



## VESPA GTS 300



Innovation and elegance at the highest level: This flagship scooter is available in a range of sophisticated colours and refined stylistic solutions: daytime running LED lights, ergonomic seat with non-slip fabric, USB port, and bike finder system. The powerful 300cc engine complies with Euro 4 regulations, resulting in lower consumption and a quiet start, and benefits from a two-channel ABS system that is coupled with the ASR traction control system, for added riding safety.



## VESPA *GTS SUPER* 125 / 300



King of the sports models. Sporty and aggressive with its large steel body, black diamond finish wheel rims and double upholstered set with trim or alternatively a single sports seat is available as an additional accessory. The liquid-cooled Euro 4, "i-Get" 125cc engine offers the maximum in terms of efficiency, low fuel consumption, quieter running and respect for the environment, thanks to the new Start&Stop system, patented by Piaggio. The powerful 300cc engine completes the range and also complies with Euro 4 regulations. It has maximum stability thanks to the ABS system that is also coupled with the ASR system on the 300cc model, for added riding safety.



## VESPA *GTS SUPERSPORT* 125 / 300



The essence of Vespa sportiness. All-black wheel rims, dedicated graphics, opaque metallic grey or yellow paintwork, double-upholstered seat and appealing graphics on the instrumentation panel. The front indicator lights contain LEDs that act as daytime running lights and the Vespa Multimedia Platform system (accessory) connects your smartphone to the on-board electronic system to obtain real-time information on vehicle performance and status.



## ***GTS TOURING*** 125 / 300

A special scooter that pays homage to Vespa tradition of travel, freedom and exploration. Hosting a small windshield which is protective without affecting elegance and front and rear luggage racks which together with the ample under seat compartment offer additional capacity. Powered by the best technological safety equipment and Euro 4 engines, the Vespa GTS Touring gives urban and out-of-town routes that extra sprint with reduced consumption.





## **VESPA SEI GIORNI 300**



An exclusive limited-edition Vespa. Named after the legendary model which was specifically produced for the “Varese International Six Day” regularity race in 1951. The aesthetics follow the style of the most sporting Vespa with the black number plate holder which is enhanced by all-black details - such as the wheel rims and exhaust silencer and complimented by aggressive red details. Other distinctive features are the “low headlight”, the smoked windshield and the single-seat (also approved for a passenger). The USB port, located inside the glove compartment behind the shield is standard, while the front indicator lights contain a series of LEDs that act as daytime running lights. On the safety front, the ABS anti-lock braking system is standard.



## VESPA PRIMAVERA 50 / 125



Fifty years after its debut, the Vespa Primavera is still a success. Featuring modern, flowing lines that recall the “key points” of the stylish and exclusive “Vespa 946” design, but restyled to make it even more agile and technological. The new 12-inch wheel rims with five-spoke design, the largest in Vespa history, provide stability and safety on all road surfaces. The single-cylinder four-stroke engine provides a smooth and quiet ride whilst reducing fuel consumption and delivering top of the range performance. Front and rear LED lighting and bike finder with remote control are standard on the 125cc version.





# VESPA

## PRIMAVERA *TOURING* 125



Dedicated to those who love to travel. Retro styled chrome front and rear racks which come as standard emphasise the touring capabilities of this scooter, whilst technologically it has received all of the same improvements as the restyled Primavera model. The single-cylinder four-stroke engine ensures top performance and low fuel consumption. The 12-inch wheels provide stability and cruising comfort on any terrain whilst the ergonomic seat and windshield add to the practicality and style of the Primavera Touring.







# VESPA PRIMAVERA 50th ANNIVERSARY 125



Half a century after 1968, the Vespa Primavera is preparing to celebrate its birthday. Vespa Primavera 50th Anniversary encompasses the freshness, independence and desire to be different. Available in 125cc displacement with the latest Piaggio i-Get engine and defined by its distinctive grey finish five-spoke wheels, dedicated blue and brown colours with contrasting seat and distinctive logo on the back of the shield.

**VESPA GTS  
YACHT CLUB**

125 / 300 



**VESPA PRIMAVERA  
YACHT CLUB**

50 / 125 



**SPECIAL SERIES  
VESPA YACHT CLUB**

**VESPA GTS SUPER  
NOTTE**

125 / 300 



**SPECIAL SERIES  
VESPA NOTTE**



**GTS**  
**GTS Touring**  
**GTS Super**  
**GTS SuperSport**  
**300**

**GTS Touring 125**  
**GTS Super 125**  
**GTS SuperSport 125**

**Sei Giorni**  
**300**

**Primavera**  
**50 4S3V**

**Primavera**  
**Primavera Touring**  
**125 3V**

<i>Engine</i>	4-valve 4-stroke single cylinder, electronic injection, catalysed	4-valve 4-stroke single cylinder, electronic injection, catalysed	4-valve 4-stroke single cylinder, electronic injection, catalysed	3-valve 4-stroke single cylinder i-Get catalysed	3-valve 4-stroke single cylinder i-Get catalysed
<i>Displacement</i>	278.3 cc	124.7 cc	278.3 cc	49.9 cc	124.5 cc
<i>Bore x stroke</i>	75 mm x 63 mm	52 mm x 58.7 mm	75 mm x 63 mm	39 mm x 41.8 mm	52 mm x 58.6 mm
<i>Max power at the crank shaft</i>	15.6 kW - 21.2 HP at 7,750 rpm	9 kW - 12.2 HP at 8,250 rpm	15.6 kW - 21.2 HP at 7,750 rpm	2.4 kW at 7,500 rpm	7.9 kW - 10.7 HP at 7,700 rpm
<i>Max torque</i>	22 Nm at 5,000 rpm	11.1 Nm at 6,750 rpm	22 Nm at 5,000 rpm	3 Nm at 7,500 rpm	10.4 Nm at 6,000 rpm
<i>Fuel Consumption (WMTC)</i>	85.5 MPG	117.4 MPG	82.9 MPG	97 MPG	124.7 MPG
<i>CO<sub>2</sub> emissions compliance</i>	77 g/km	60 g/km	77 g/km	65 g/km	61 g/km
<i>Fuel system</i>	Electronic Injection	Electronic Injection	Electronic Injection	Electronic Injection	Electronic Injection
<i>Cooling</i>	Liquid	Liquid	Liquid	Forced air	Forced air
<i>Starter</i>	Electric	Start&Stop system	Electric	Electric	Electric
<i>Gearbox</i>	CVT automatic with torque server	CVT automatic with torque server	CVT automatic with torque server	CVT automatic with torque server	CVT automatic with torque server
<i>Clutch</i>	Automatic dry centrifugal with shock absorbers	Automatic dry centrifugal with shock absorbers	Automatic dry centrifugal with shock absorbers	Automatic dry centrifugal with shock absorbers	Automatic dry centrifugal with shock absorbers
<i>Load-bearing structure</i>	Sheet steel shell with welded structural reinforcements	Sheet steel shell with welded structural reinforcements	Sheet steel shell with welded structural reinforcements	Sheet steel shell with welded structural reinforcements	Sheet steel shell with welded structural reinforcements
<i>Front suspension</i>	Single arm with helical spring and hydraulic shock absorber	Single arm with helical spring and hydraulic shock absorber	Single arm with helical spring and hydraulic shock absorber	Single arm with helical spring and single hydraulic shock absorber	Single arm with helical spring and single hydraulic shock absorber
<i>Rear suspension</i>	Double hydraulic shock absorber with helical spring with preload adjustable in 4 positions	Double hydraulic shock absorber with helical spring with preload adjustable in 4 positions	Double hydraulic shock absorber with helical spring with preload adjustable in 4 positions	Helical spring with single hydraulic shock absorber	Helical spring with preload adjustable (4 positions) and single hydraulic shock absorber
<i>Front brake</i>	Stainless steel Ø 220 mm disc with hydraulic control	Stainless steel Ø 220 mm disc with hydraulic control	Stainless steel Ø 220 mm disc with hydraulic control	Stainless steel Ø 200 mm disc with hydraulic control	Stainless steel Ø 200 mm disc with hydraulic control
<i>Rear brake</i>	Stainless steel Ø 220 mm disc with hydraulic control	Stainless steel Ø 220 mm disc with hydraulic control	Stainless steel Ø 220 mm disc with hydraulic control	Ø 140 mm drum with mechanical control	Ø 140 mm drum with mechanical control
<i>ABS/ASR system</i>	ABS/ASR standard	ABS standard	ABS standard	-	ABS standard
<i>Front tyre</i>	Tubeless 120/70 - 12"	Tubeless 120/70 - 12"	Tubeless 120/70 - 12"	Tubeless 110/70 - 12"	Tubeless 110/70 - 12"
<i>Rear tyre</i>	Tubeless 130/70 - 12"	Tubeless 130/70 - 12"	Tubeless 130/70 - 12"	Tubeless 120/70 - 12"	Tubeless 120/70 - 12"
<i>Length / Width / Wheelbase</i>	1,950 / 755 / 1,375 mm	1,950 / 755 / 1,380 mm	1,950 / 770 / 1,375 mm	1,870 / 735 / 1,330 mm	1,870 / 735 / 1,340 mm
<i>Seat height</i>	790 mm	790 mm	790 mm	790 mm	790 mm
<i>Fuel tank capacity</i>	8.5 litres	7 litres	8.5 litres	8 litres	8 litres
<i>Emissions compliance</i>	Euro 4	Euro 4	Euro 4	Euro 4	Euro 4

The company reserves the right to make technical and aesthetic changes at any time. Ride with caution, always wearing a helmet and suitable clothing. Respect the highway code and the environment. Read the operation and maintenance manual carefully. Always ask for original spare parts approved in accordance with the current legislation. Contact Official Vespa Retailers and Authorised Resellers for a safe purchase and guaranteed service. Vespa original spare parts ensure quality and maintain the performance levels of your vehicle intact.

COMPANY WITH  
 QUALITY SYSTEM  
 CERTIFIED BY DNV  
 = ISO 9001 =

COMPANY WITH  
 ENVIRONMENTAL SYSTEM  
 CERTIFIED BY DNV  
 = ISO 14001 =

COMPANY WITH  
 SAFETY SYSTEM  
 CERTIFIED BY DNV  
 = OHSAS 18001 =

Vespa is a registered trademark of Piaggio & C. S.p.A.



Vespa®

UK.VESPA.COM



FOR CHILDREN

A BETTER LIFE FOR THE  
CHILDREN OF THE WORLD